



# **FuelMaster Plus (FMPlus®) Installation Guide**

---

11/9/2023

Software Version: 5.32.3.0

Document Version: 9.0

© Syntech Systems, Inc. 2014–2023. All Rights Reserved.

Except as permitted under the United States Copyright Act of 1976, no part of this publication may be reproduced, stored in a retrieval system, or transmitted in any form or by any means — electronic, mechanical, photocopying, recording or otherwise — without the prior written permission of Syntech Systems, Inc.

[www.myfuelmaster.com](http://www.myfuelmaster.com)

Syntech Systems, Inc.  
100 Four Points Way  
Tallahassee, Florida 32305

Phone: (850) 878-2558  
FAX: (850) 877-9327  
Support: (800) 888-9136 Ext. 2

FMPlus Installation Guide

Publication Date: 11/9/2023

Document Version 9.0

## Trademark Acknowledgements

FUELMASTER®, FMPlus®, FMLINK®, FMLive®, PROKEE®, AIM Titanium®, AIM2® and AIM2.4® are trademarks of Syntech Systems, Inc.

Trademarks of other products mentioned in this manual are held by the companies producing them. Use of a term in this manual should not be regarded as affecting the validity of any trademark. All other trademarks are acknowledged.

## Document Version History

Version	Date	Description
6.0	11/1/2017	Updated FMPlus Installation Guide for MS SQL 2014.
7.0	11/13/2020	Updated FMPlus Installation Guide for MS SQL 2019.
7.1	3/11/2022	Updated to include <ul style="list-style-type: none"><li>• Recommended PC or Server Requirements</li><li>• Supported OSes</li><li>• Minimum PC Requirements</li></ul>
7.2	8/2/2022	Updated <a href="#">FMPlus Server Tools Installation</a> to factor in setup.exe.
8.0	1/30/2023	Beginning with the SW v5.23.3.0 release, The FMPlus Server Tools installation provides SQL Server 2019 SP2 Express. The guide first provides an overview on how to run the FMPlus Server Tools installation to install SQL Server 2019, proceeds with instructions on how to install the FMPlus software for use with a SQL database, as well as instructions for upgrading from a SQL or Access database.  Replaced the steps and screenshots in <a href="#">FMPlus Installation</a> to reflect current process.
9.0	11/9/2023	FMP 5.32.30 provides SQL Server 2022. Updated screenshots throughout.

# Table of Contents

- Related documentation .....4
- Conventions used in this guide.....4
- Certifications.....5
- Recommended PC or Server Requirements.....5
- Supported OSES.....5
- Minimum PC Requirements.....6
- Introduction.....7
- Applicability.....7
- FMPlus Server Tools Installation.....8
- FMPlus Server Tools Silent Install Option.....20
- FMPlus Installation ..... 21
- Creating a New or Using an Existing SQL Database for FuelMaster..... 28
- Upgrading/Converting an Access Database to a SQL Database..... 36

## Related documentation

The FMPlus User Manual contains information to which you may need to refer.

## Conventions used in this guide

To help you find important information, this guide uses the following conventions:

<b>Convention</b>	<b>Indicates</b>
<b>Bold text</b>	The names of elements of the user interface, such as menus, buttons, and options; In tutorials, clickable items
Monospaced text	Code, file names, directory paths, and on-screen computer output.
<b>Bold monospaced text</b>	Text that you should type exactly as shown, such as: Type <b>ABC</b> at the prompt.
<i>Italic text</i>	Command-line placeholders that you should replace with a real name or value. Also, book titles, new words or terms, or words to be emphasized.

### *NOTE*

Notes that contain additional explanation.

### *TIP*

Tips that contain shortcuts or special information.

### *CAUTION*

Cautions that contain information to avoid equipment damage or data loss.

### *WARNING*

Warnings that contain information about potentially damaging actions. Read them carefully to prevent personal injury and health hazards.

## Certifications

Certifications have been awarded by the following organizations.

- US and Canadian equipment certifications through the following:
  - FCC (Federal Communications Commission),
  - Intertek (ETL, cETL),
  - CAN/CSA (Canadian Standards Association),
  - National Conference on Weights and Measures (National Type Evaluation Program: NTEP),
  - Payment Card Industry (PCI) Security Standards Council (PA-DSS compliance),
- European equipment certification through the following:
  - TUV SUD, FM Approvals
  - ATEC Certification
- Microsoft Gold Partner

## Recommended PC or Server Requirements

- Intel Core i3 Processor or greater
- 4GB of RAM
- DVD-ROM
- 12GB free Hard Drive space – Additional space required if running full MS SQL Server for large databases.
- 56K Baud Analog Modem
- 1024x768 Screen Resolution
- Network Connection
- USB for Key Encoding, if needed
- Solid State Drive (SSD)

## Supported OSes

- Windows 10 64-bit
- Windows Server 2008/R2 64-bit
- Windows Server 2016 64-bit

Microsoft versions above these listed will also be supported.

## Minimum PC Requirements

- 3.0 GHz Pentium 4 Processor 64-bit
- 2GB of RAM for 64-bit
- 12x CD-ROM
- 6 GB free Hard Drive space
- 33.6K Baud Analog Modem or Network Internet Connection
- 1024x768 Screen Resolution
- USB for Key Encoding, if needed
- Windows 10 64-bit

***NOTE***

FMPlus is not compatible with Microsoft HOME editions.

## Introduction

This guide provides basic instructions on how to install FMPlus for use with a SQL database.

## Applicability

This guide is for FuelMaster Plus software version 5.32.3.0 and greater.

Please note:

- FuelMaster Plus SW v5.23.3.0 to 5.31.3.0 provides SQL Server 2019 SP2 Express. See FuelMaster Guide Rev. 8.0.
- FuelMaster Plus SW v5.14.3.0 to 5.22.3.0 provides MS SQL 2014; see FuelMaster Installation Guide Rev. 6.0, November 1, 2017.
- FuelMaster Plus SW v5.11.3.0 to v5.11.3.2 provides MS SQL 2012; see *FuelMaster Installation Guide Rev 5.0*, October 27, 2016.
- FuelMaster Plus SW v5.3.3.0 to v5.10.3.0 provides MS SQL 2008 R2; see *FuelMaster SQL Server Install Guide Rev 4.0*, June 16, 2014.
- For releases prior to 5.3.3.0, please see *FuelMaster SQL Server Install Guide Rev 3.0*, April 8, 2014.

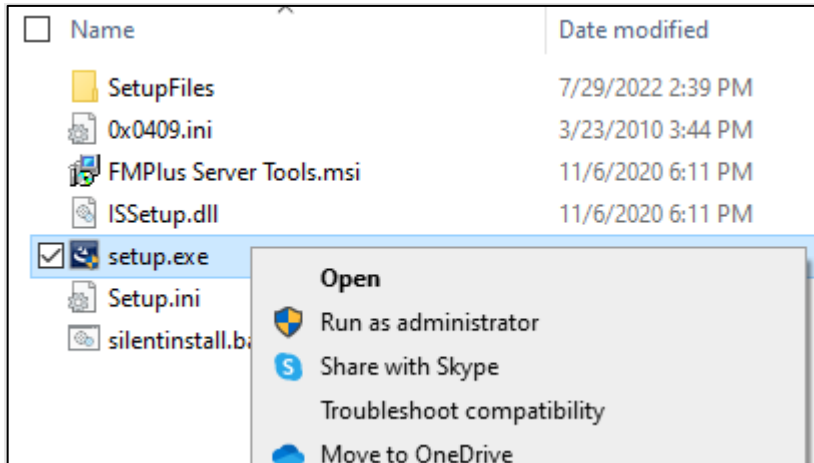


*Questions? Contact Syntech Systems, Inc.'s industry leading Customer Satisfaction Center (CSC) at (800) 888-9136 x2., or email us at [support@myfuelmaster.com](mailto:support@myfuelmaster.com).*

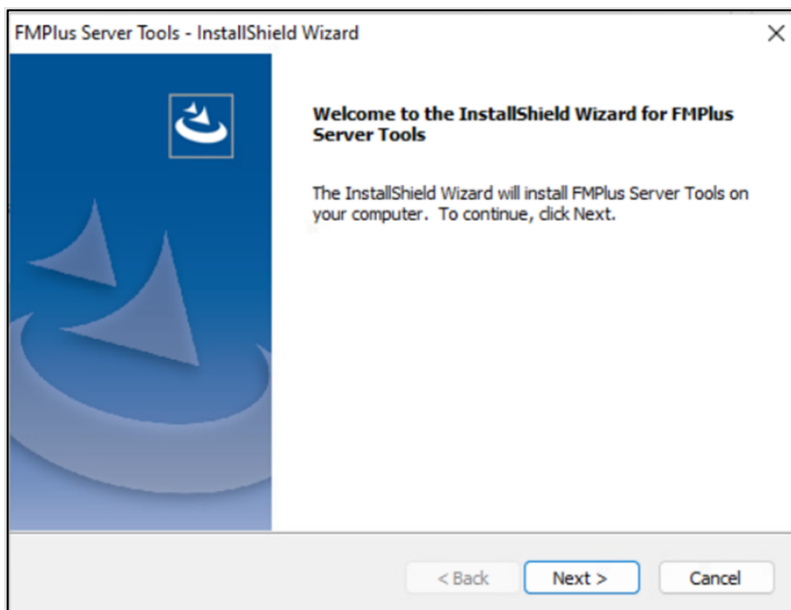
---

## FMPlus Server Tools Installation

1. As an admin user (or run as administrator), open or Run as administrator setup.exe.

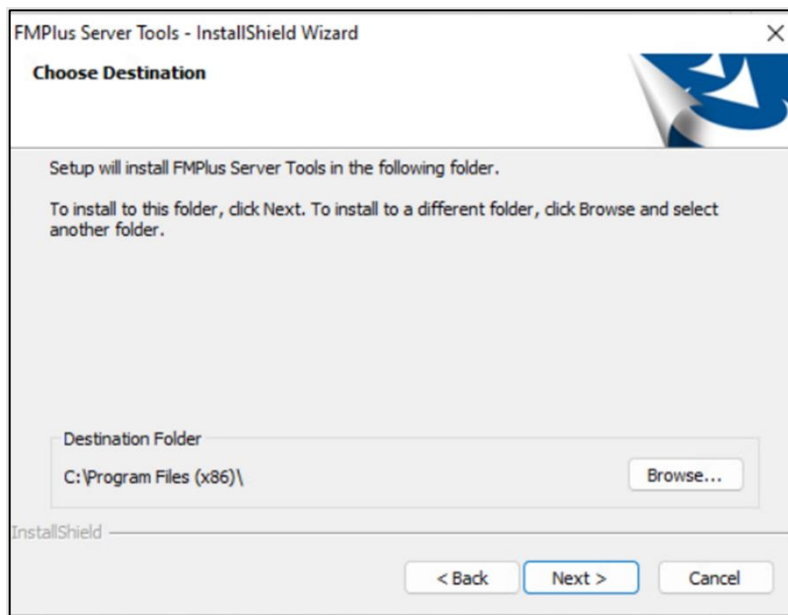


2. Select **Next** to begin.

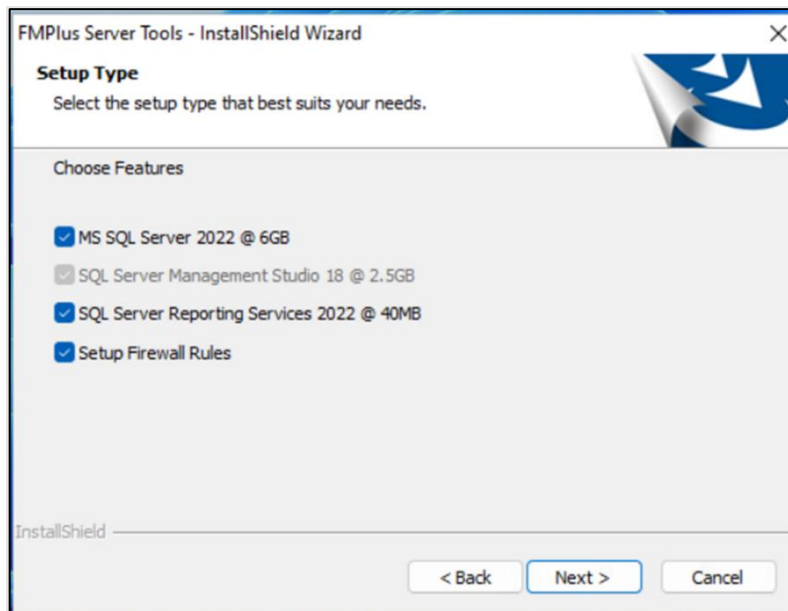


3. To install the the C: drive, select **Next**. To install to a different folder, select Browse, and select another folder.





4. Ensure the MS SQL Server 2022 @ 6GB checkbox is ticked.
5. Select Next.

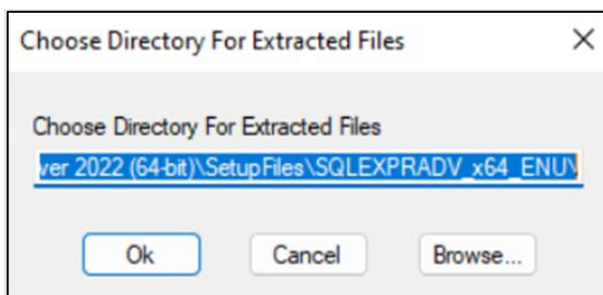
**NOTE**

Your feature selections will be installed in turn, beginning with MS SQL Server. If you have already installed MS SQL Server 2019, you may uncheck it to allow installation of SQL Server Management Studio.

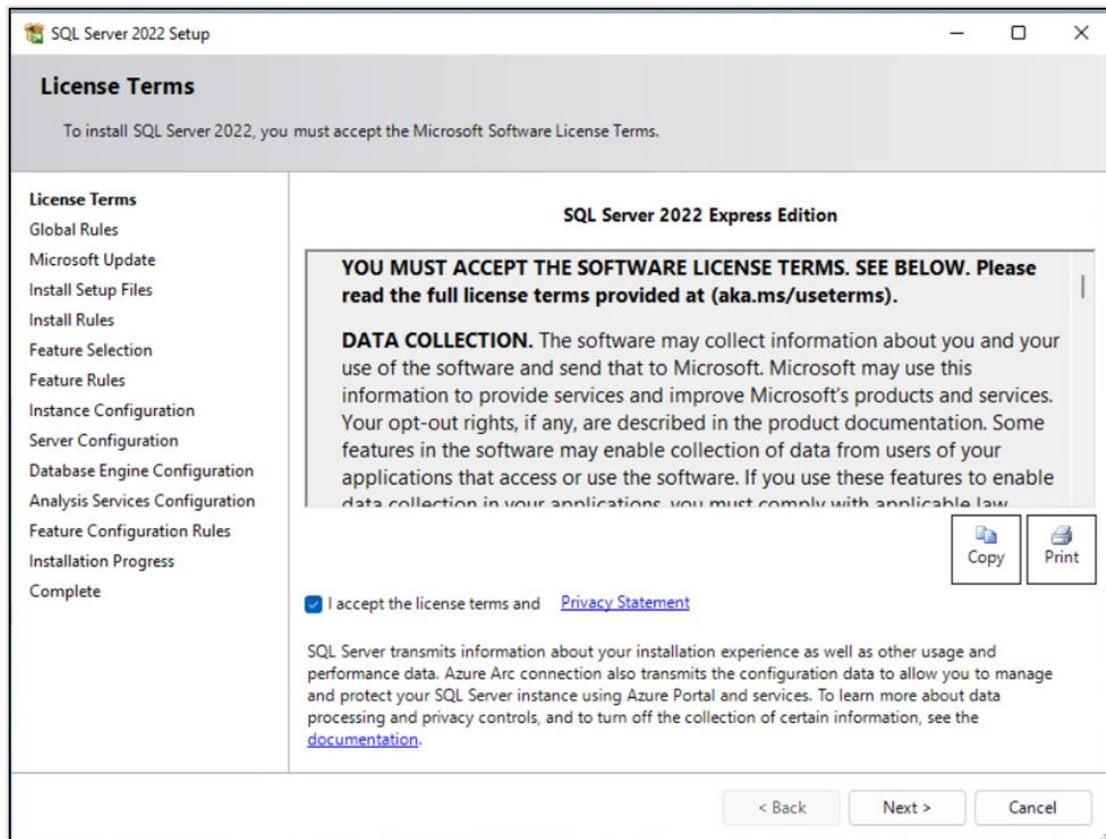
### Remaining Checkbox Options and Uses

Option	Use
SQL Server Management Studio	Optional but recommended; enables Syntech’s Systems, Inc.’s CSC to troubleshoot issues with your database if necessary.
SQL Server Reporting Services	Optional; allows for reporting outside of FMPlus Crystal reporting (not necessary if FMPlus reporting suffices).
Setup Firewall Rules	Optional; helps if SQL Server is to be installed on one machine and FMPlus or the download service is to run on another machine.

6. Select **Ok**. The SQL 2019 installation launches.



7. Ensure I accept the license terms and Privacy Statement checkbox is ticked, and select Next.

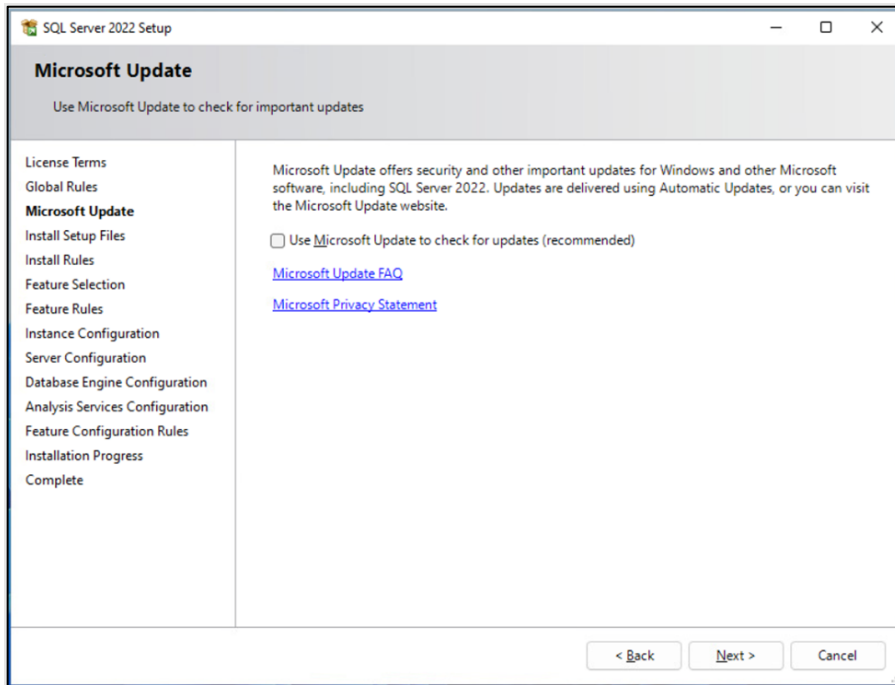


**NOTE** If Global Rules pass, the dialog may not be seen; if any Global Rules fail, the dialog will display and corrections must be made before restarting the installation.

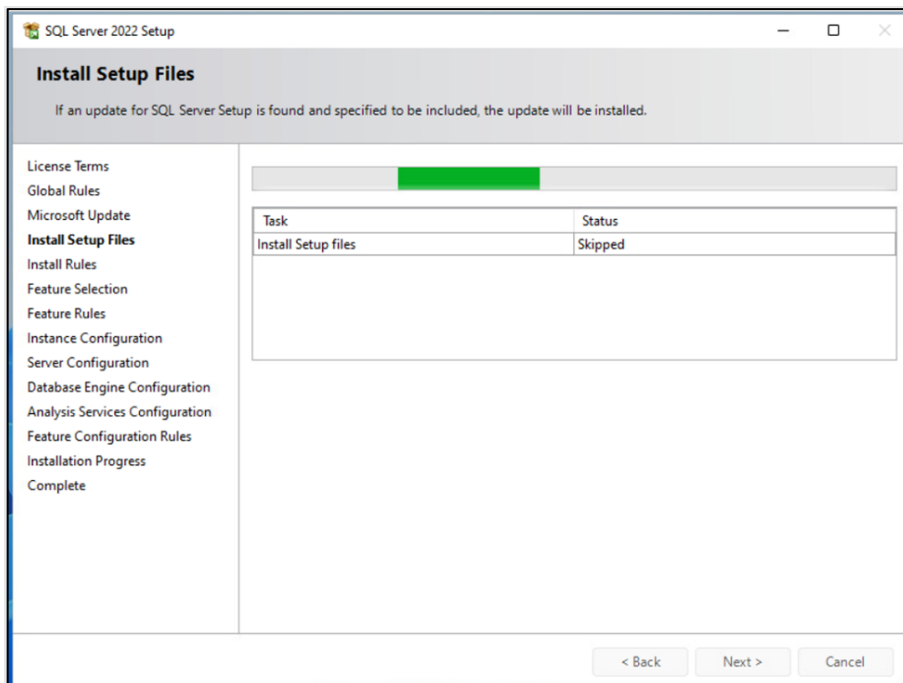
8. Ensure the Use Microsoft to check for updates checkbox is not ticked.

**TIP** Tick this checkbox only if you have a fast connection, and/or you are not in a hurry to install SQL Server.

### 9. Select Next.



Assuming you allowed Microsoft to check for updates, if an update for SQL Server Setup is found and specified to be included, the update will be installed before automatically moving to the next dialog.

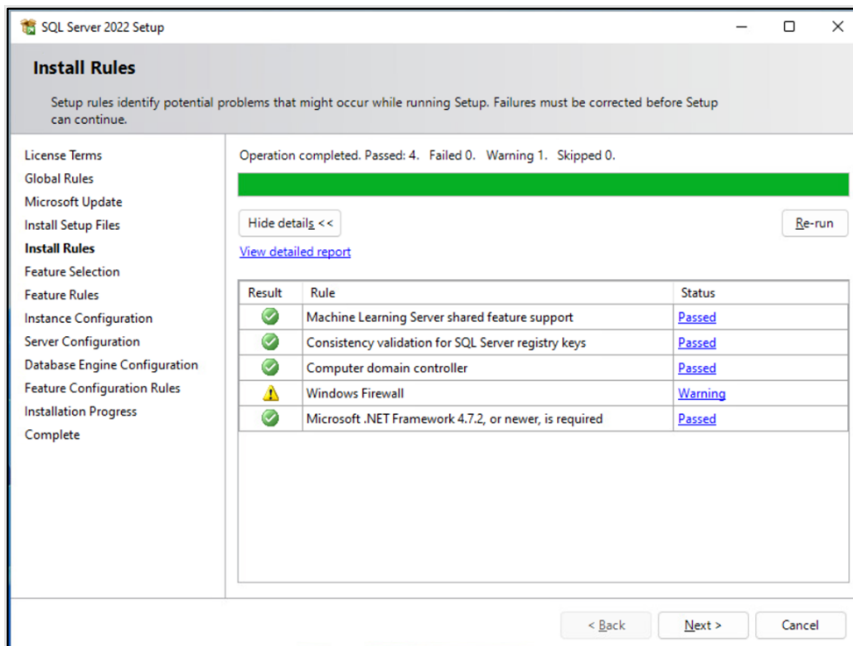


Setup rules identify potential problems that might occur while running Setup. Typically, these failures must be corrected before the setup can continue.

**NOTE** While installing setup rules, you might notice a Windows Firewall warning. Though some of the problems appearing in this list may block setup, the Windows Firewall warning does not block the installation.

FMPlus Server Tools can create firewall exceptions for SQL at the end of the installation.

10. Select Next.



**NOTE** The installer progress shows in the background behind the SQL Server 2019 Setup dialog box. You may move the box to monitor your progress.

11. Provide the Azure related details and select **Next** if you plan to use this feature. Otherwise, select **Next skip** to the next step.

SQL Server 2022 Setup

### Azure Extension for SQL Server

Azure Extension for SQL Server is required to enable Microsoft Defender for Cloud, Purview, and Azure Active Directory.

Azure Extension for SQL Server To install Azure extension for SQL Server, provide your Azure account or a service principal to authenticate the SQL Server instance to Azure. You also need to provide the Subscription ID, Resource Group, Region, and Tenant ID where this instance will be registered. For more information for each parameter, visit <https://aka.ms/arc-sql-server>.

Use Azure Login

Use Service Principal

Azure Service Principal ID\*

Azure Service Principal Secret\*

Azure Subscription ID\*

Azure Resource Group\*

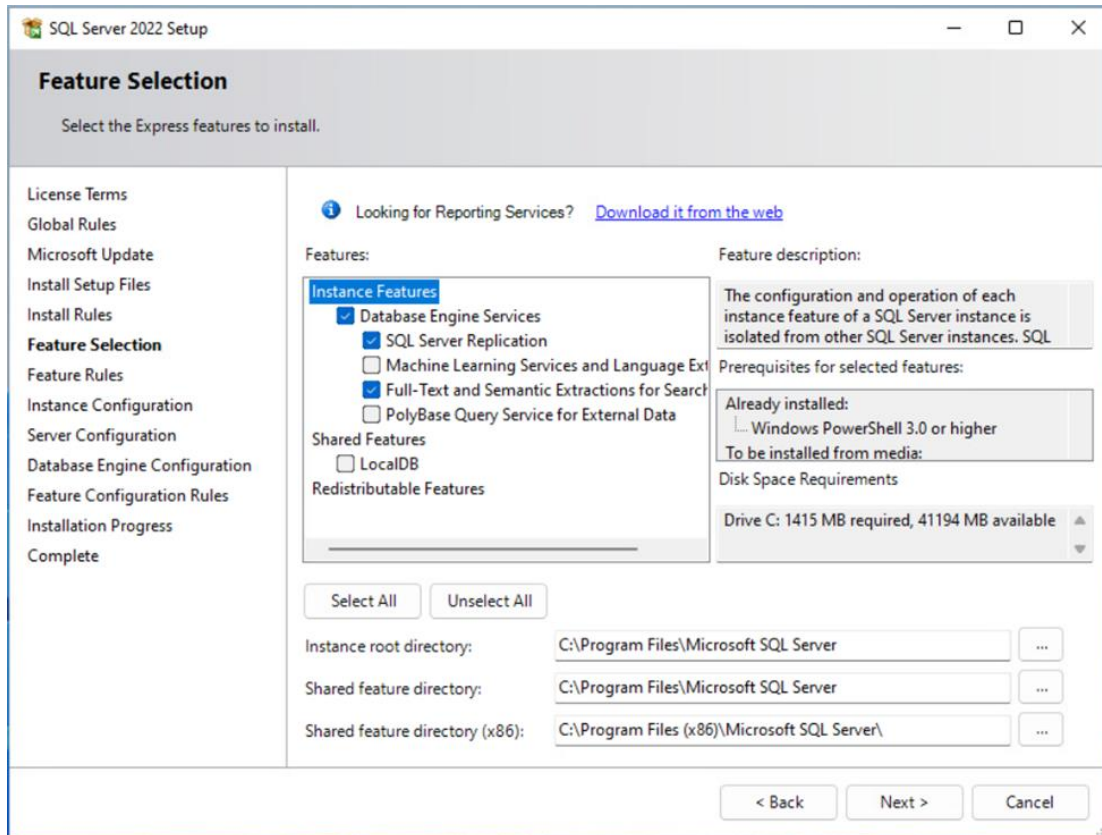
Azure Region\*

Azure Tenant ID\*

Proxy Server URL (optional)

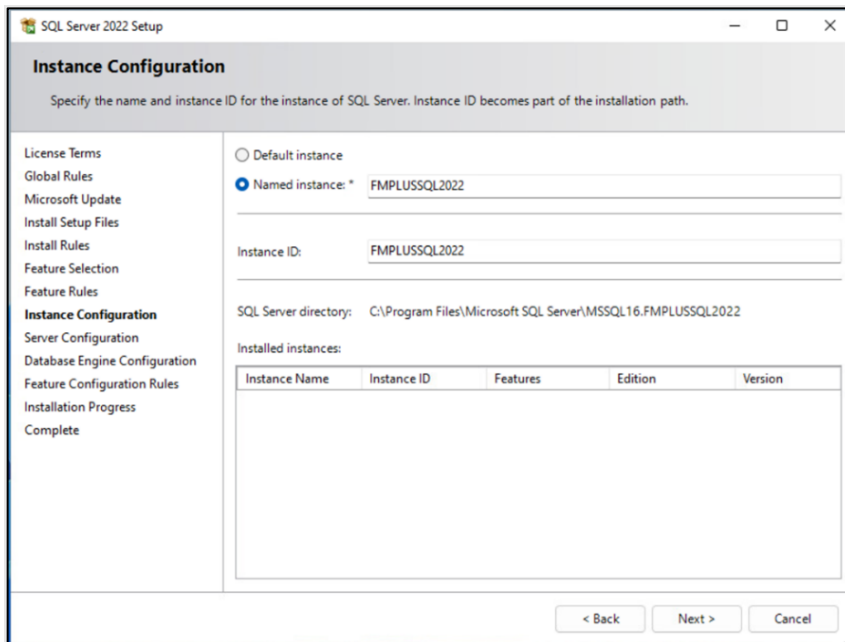
< Back Next > Cancel

12. Accept the defaults, and select **Next**.

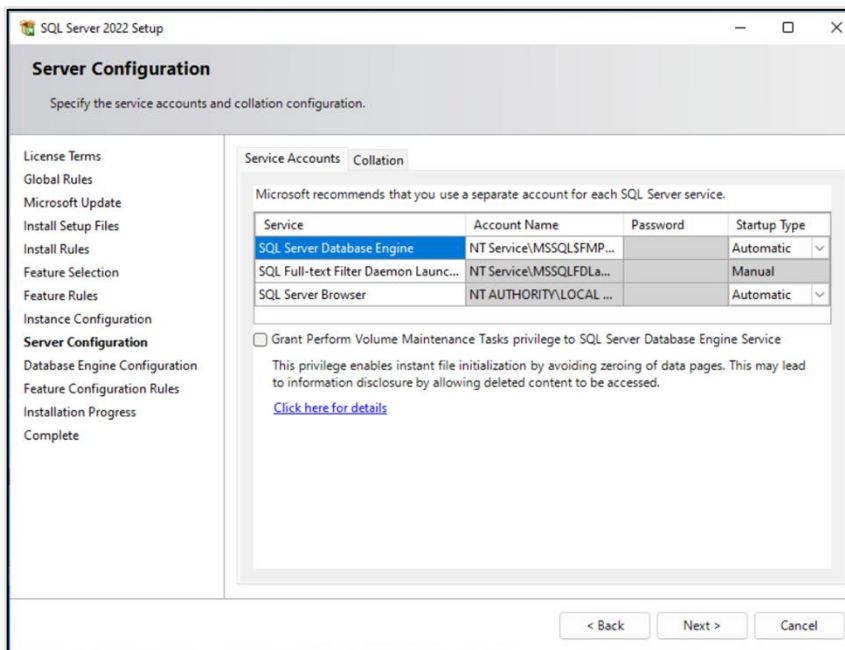


**NOTE** If Feature Rules pass, the dialog may not be seen; if there any failures occur, they must be addressed, and the installation must be restarted.

13. Select **Next**.

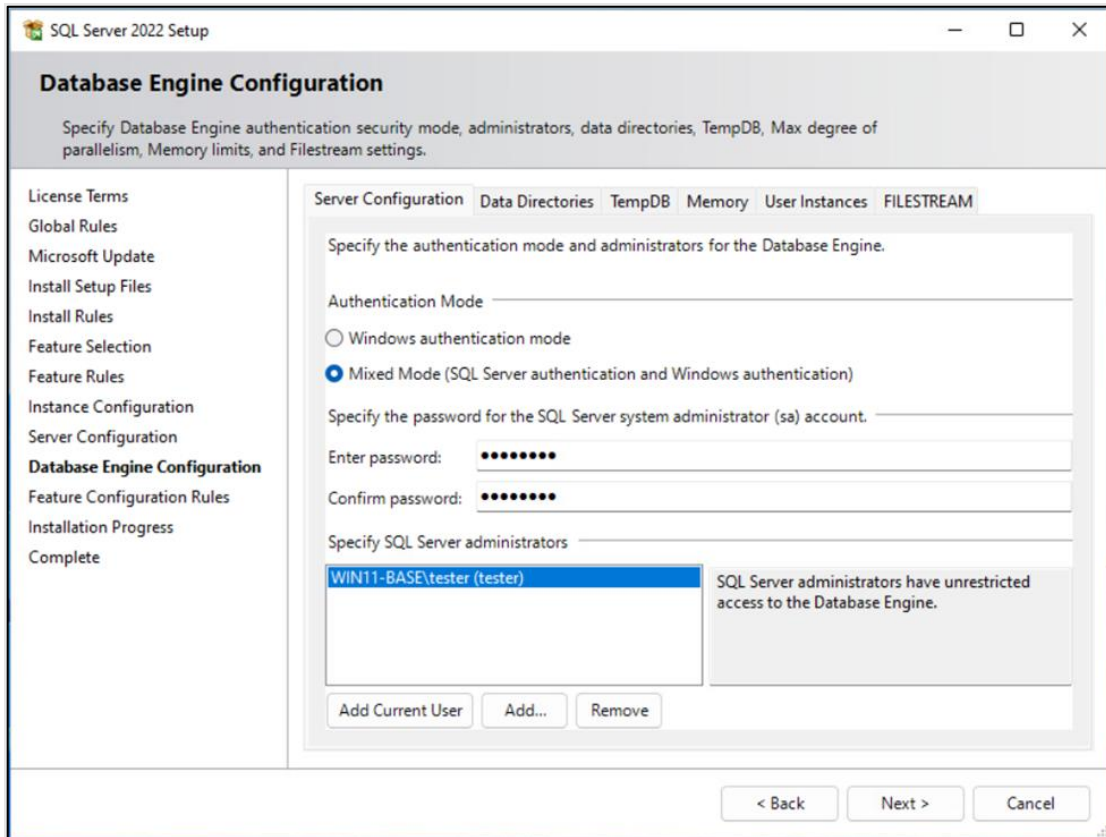


14. Select Next.



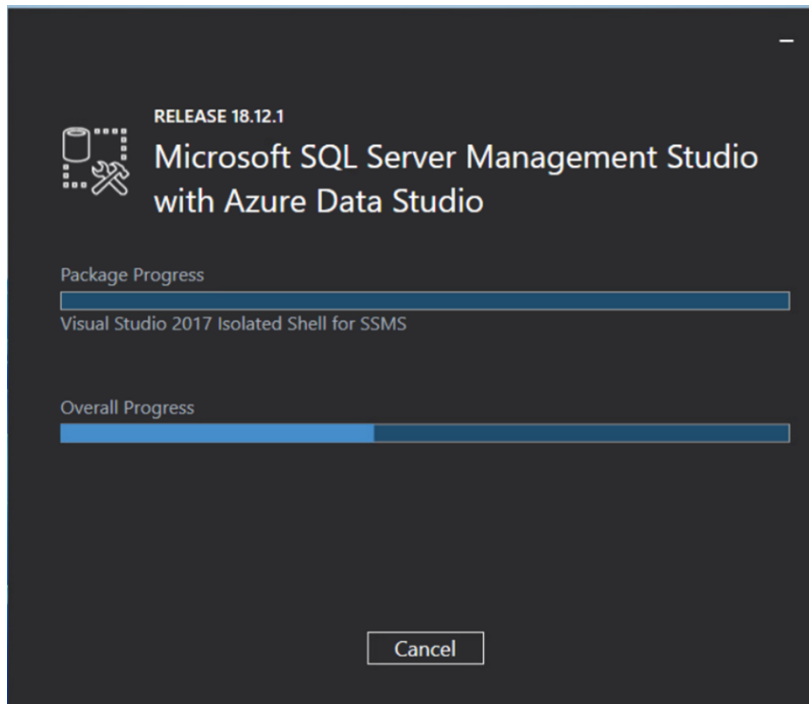


15. Accept the defaults, and select **Next**.

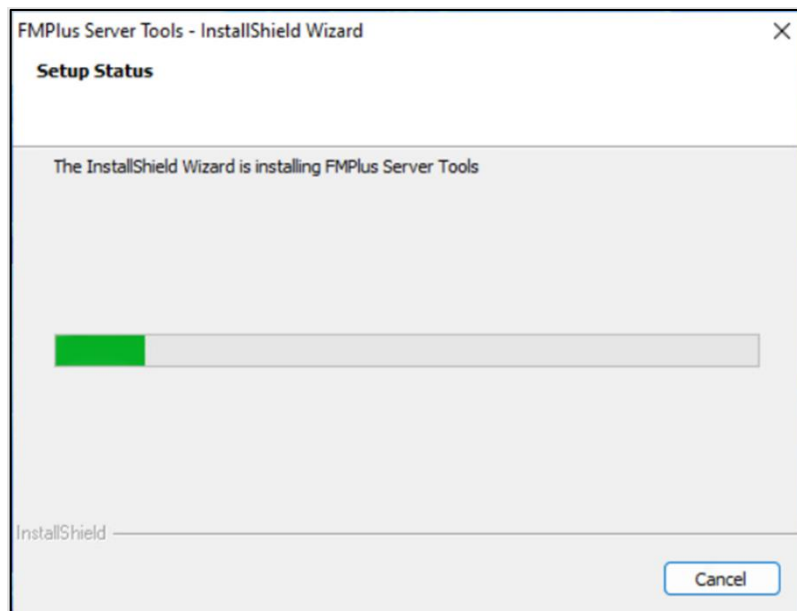


**NOTE** Mixed Mode is required. The default SA password is **stS1234!**

After the MS SQL Server installation completes, the SQL Server Management Studio installation launches.

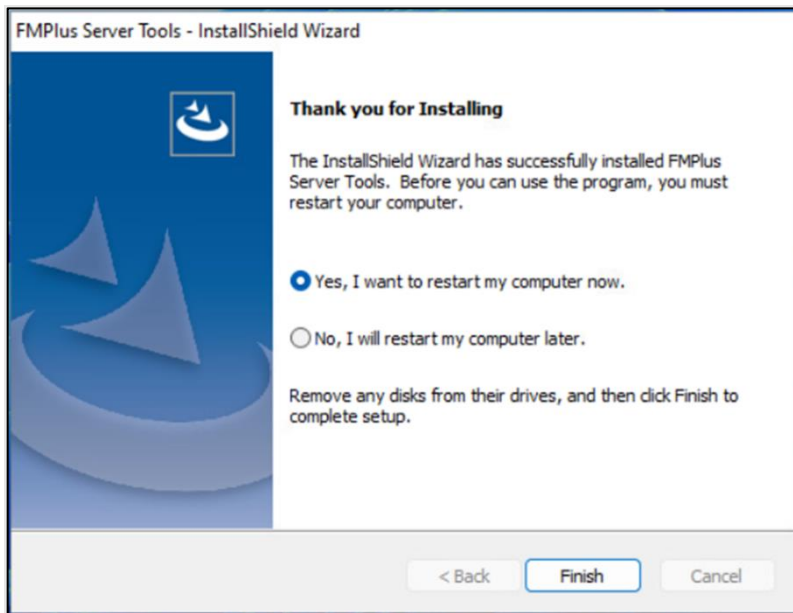


If chosen, the SQL Server Reporting Services install next. No dialogs are shown during the SSRS installation or setting the Firewall exceptions. The setup status displays during these processes.

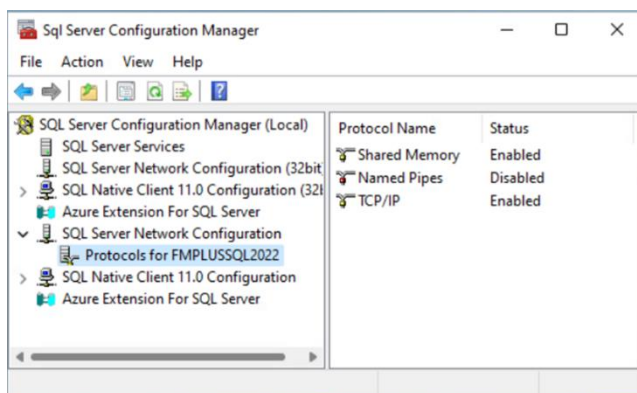


A Finish dialog displays when the installations are complete.

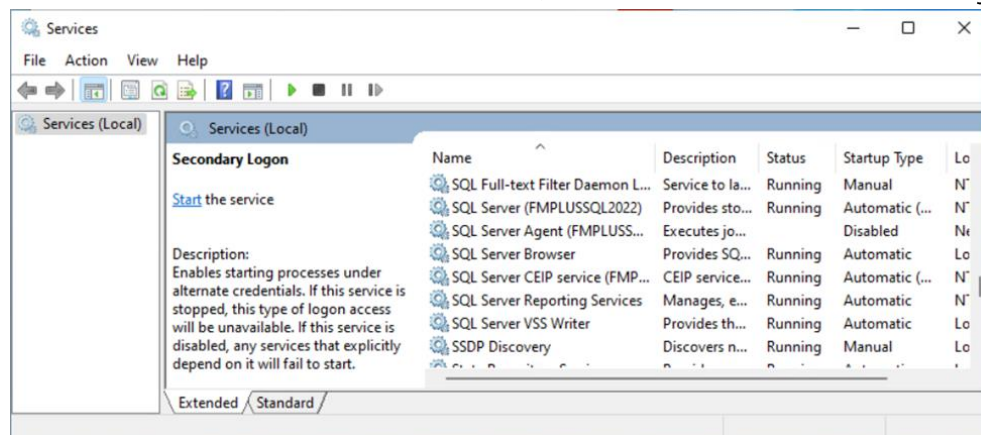
16. Select **Finish**.



As seen in the Configuration Manager, FMPlus Server Tools enables TCP\IP.



FMPlus Server Tools also sets the SQL Browser to run automatically.



## FMPlus Server Tools Silent Install Option

1. As an admin user (or run as administrator), launch the elevated command prompt.
2. Use **Windows CD** command to navigate to the SQL server install directory.
3. Type **silentinstall** followed by the switches for what you want to install. The installers run in the same order as the specified switches. For example, if you want SQL Server, SSMS, SSRS and the firewall rules in that order, enter:

```
silentinstall /SQLServer /SSMS /SSRS /FIREWALL
```

**NOTE**

The silent installer uses all the defaults. For values other than the defaults, use the interactive installer or edit the batch file and/or the INI for SQL Server.

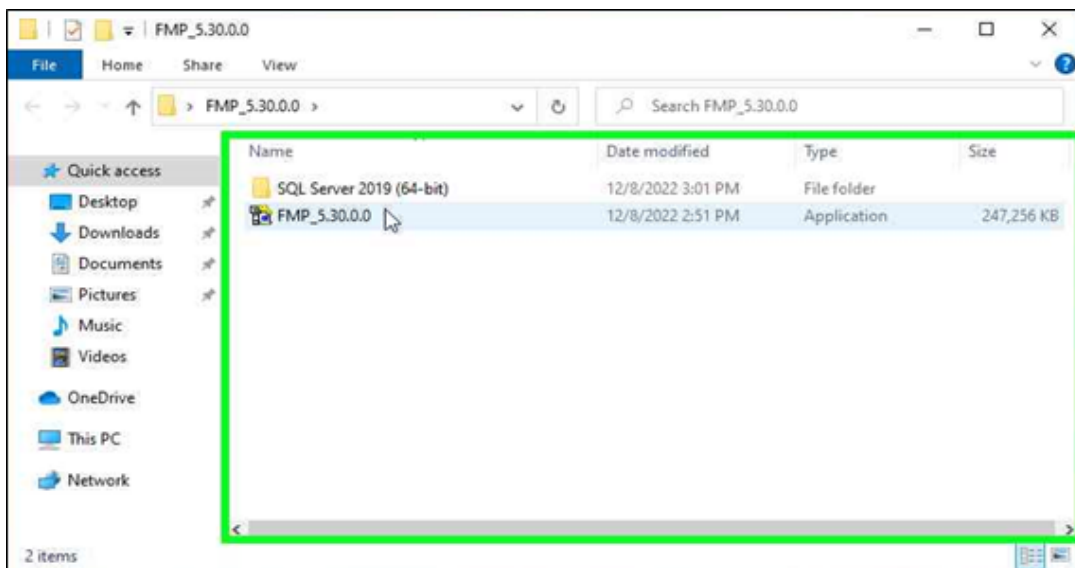
4. If needed, enter **silentinstall** with no switches to display the available switches and what they do.

## FMPlus Installation

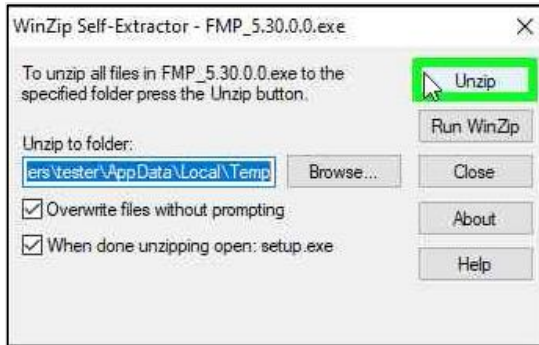
1. Double-click the **folder** copied to the desktop.



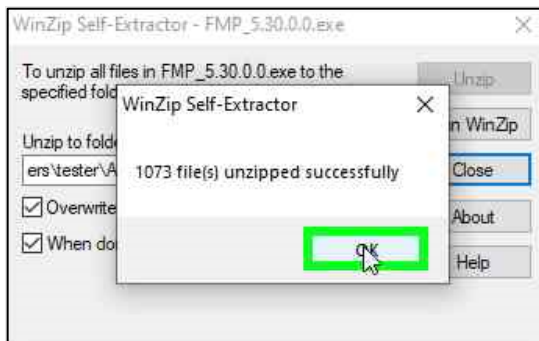
2. Double-click **FMP\_{version}** file name.



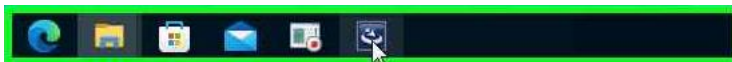
3. Select **Unzip** on the WinZip Self-Extractor - FMP.exe window.



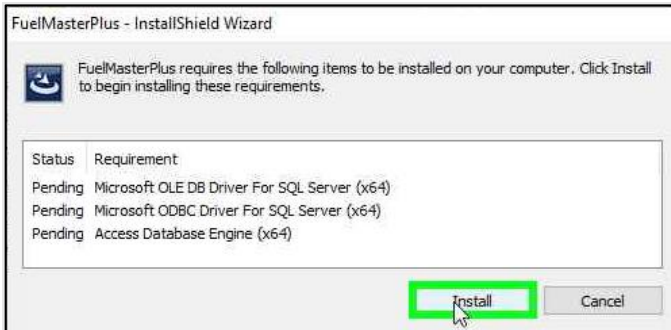
4. Select **OK**.



5. Select FuelMasterPlus - InstallShield Wizard icon from the taskbar.



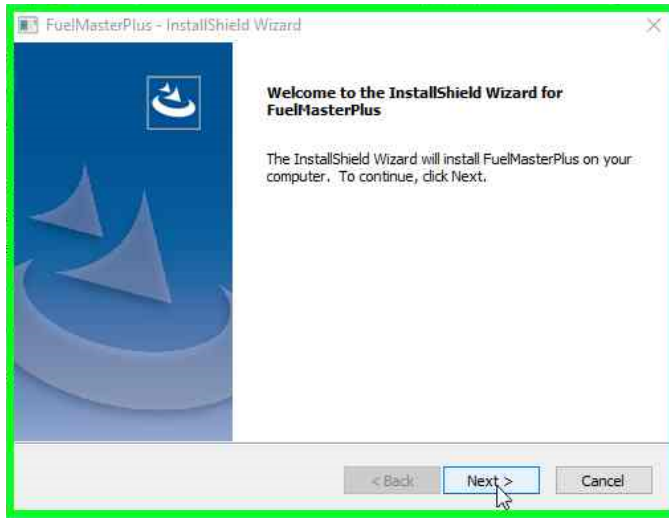
6. Select **Install** on the FuelMasterPlus - InstallShield Wizard window.



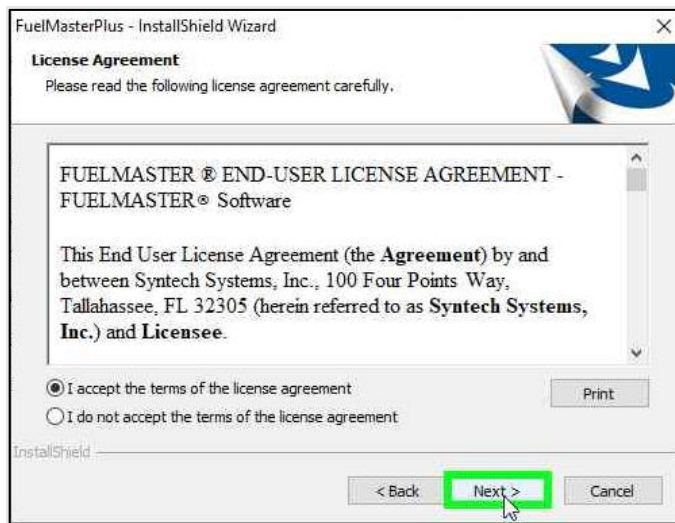
The software will prepare to install.



7. Select **Next** to continue.

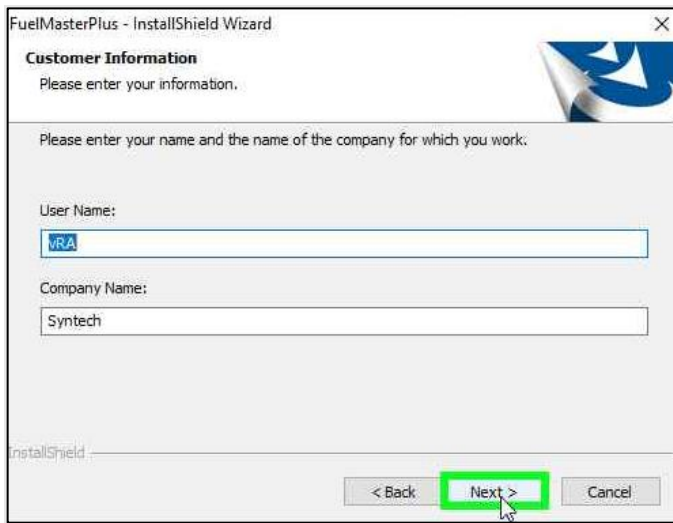


8. Read and accept the terms of the License Agreement, and select **Next**.

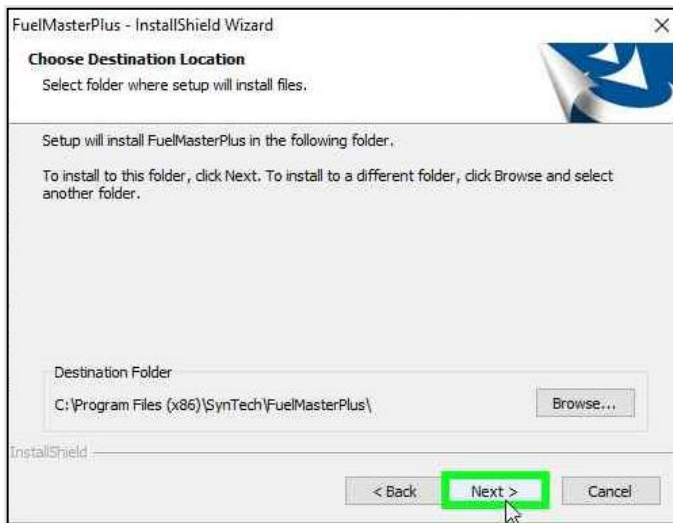


9. Complete the fields on screen (i.e., User Name and Company), and select **Next**.



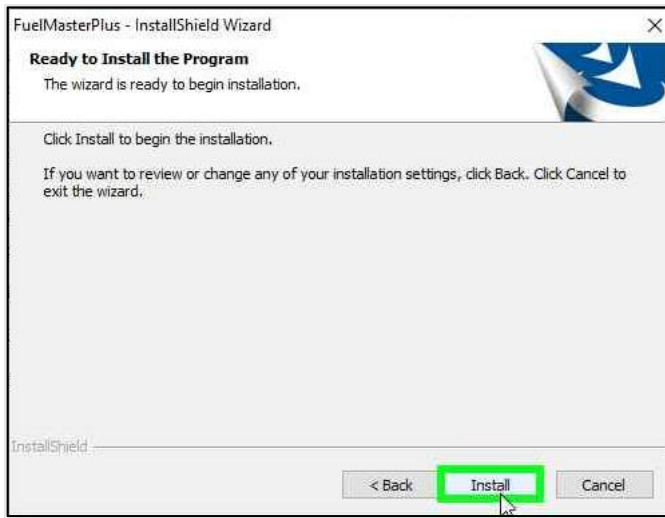


10. Select **Next** to install in the specified folder.



**NOTE** To install in a different folder, select **Browse** and select another folder.

## 11. Select **Install** to begin the installation.

**NOTE**

If you want to review or change any of your installation settings, select Back. Select Cancel to exit the wizard.

## 12. Select **Install** in Windows Security.

**NOTE**

Ensuring the checkbox, 'Always trust software from Syn-Tech Systems, Inc.' is ticked means you will not be asked again if you attempt to install drivers signed by Syntech.

13. Select **Finish** to exit the wizard.

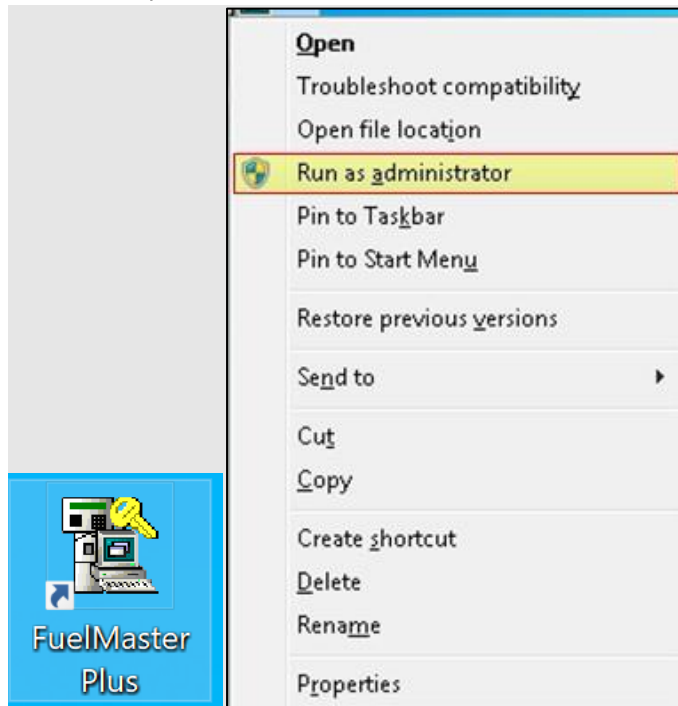


## Creating a New or Using an Existing SQL Database for FuelMaster

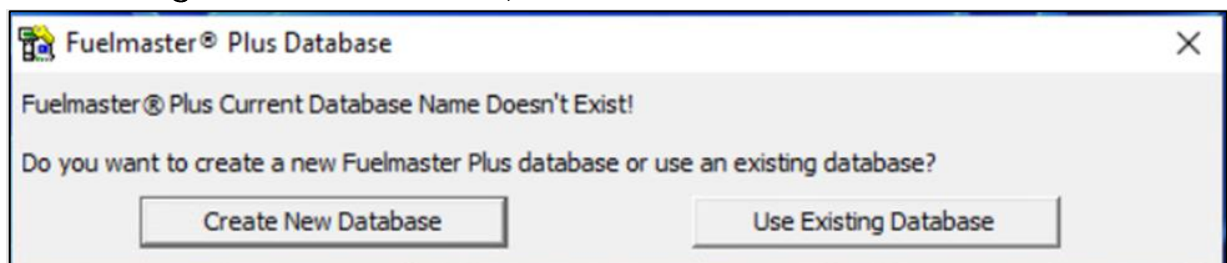
You may create a new database upon the first launch of FMPlus or by using **System > Database Manager**.

The instructions below assume FMPlus has been installed, the computer rebooted, and FMPlus is launched for the first time.

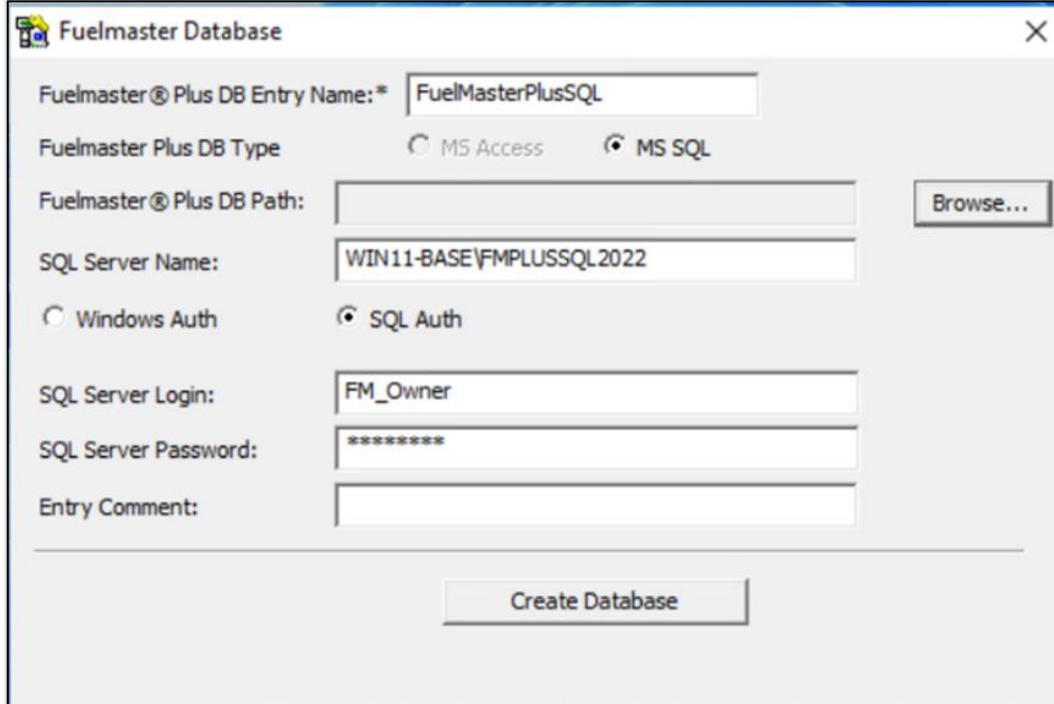
1. As an admin user (or run as administrator), launch the FuelMaster Plus icon on the desktop.



2. On the first run of FMPlus, the software prompts the user to create a new database or use an existing one. If you have an existing SQL database, select **Use Existing Database**. Otherwise, select **Create New Database**.



3. Enter the FuelMaster Plus DB Entry Name. MS SQL is selected by default.



The screenshot shows a dialog box titled "Fuelmaster Database" with the following fields and options:

- Fuelmaster® Plus DB Entry Name:** FuelMasterPlusSQL
- Fuelmaster Plus DB Type:**  MS Access,  MS SQL
- Fuelmaster® Plus DB Path:** [Empty field]
- SQL Server Name:** WIN11-BASE\FMPLUSSQL2022
- Authentication:**  Windows Auth,  SQL Auth
- SQL Server Login:** FM\_Owner
- SQL Server Password:** [Masked with asterisks]
- Entry Comment:** [Empty field]
- Buttons:**

4. Enter the SQL Server Name.

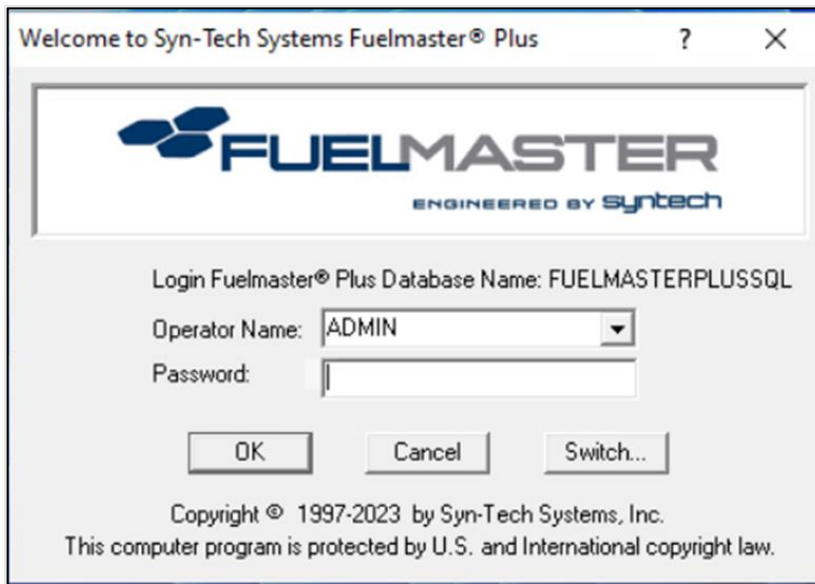
**NOTE** SQL Server follows ANSI standard naming practices. Names must begin with a letter and contain only letters, underscore characters (\_), and digits.

5. Select SQL Auth.
6. Enter the SQL Server Login. 'FM\_Owner' is recommended.
7. Enter the SQL Server Password. Recommended password: stS1234!
8. Select Set As Current Database.

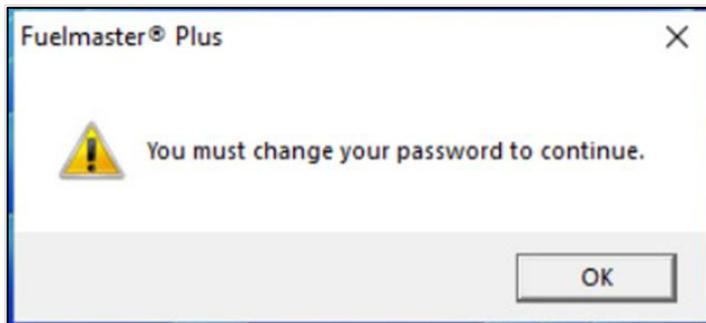
The Database Converter launches and begins building the database.



9. Upon completion, select Exit.
10. As an admin user (or run as administrator), launch the FuelMaster Plus icon on the desktop.
11. On the first logon screen, select **OK** without a password, and you will be prompted to set one.



12. Select OK.



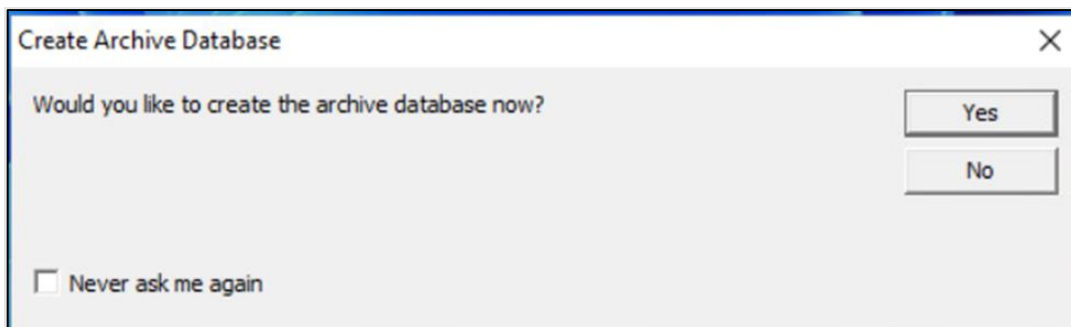
13. Set your password, and select OK.



14. Select **OK**. A message will appear asking if you would like to create the archive database now.

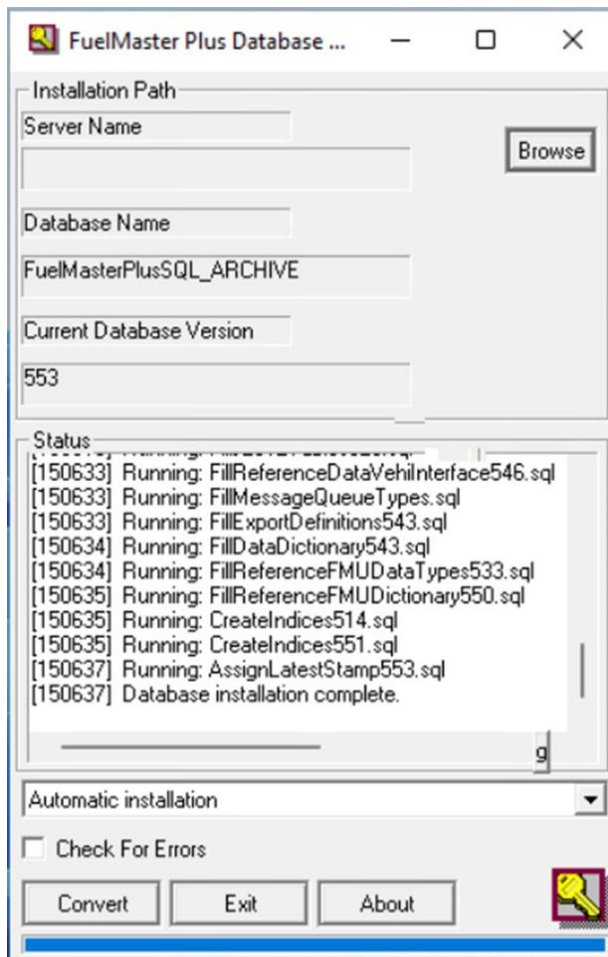


15. Select **Yes** if desired. Otherwise select **No**, and skip to selecting the System Type.

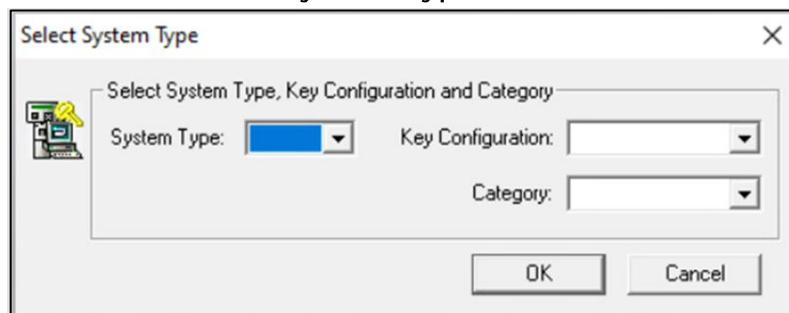


16. Define the Installation Path, and select **Convert**.



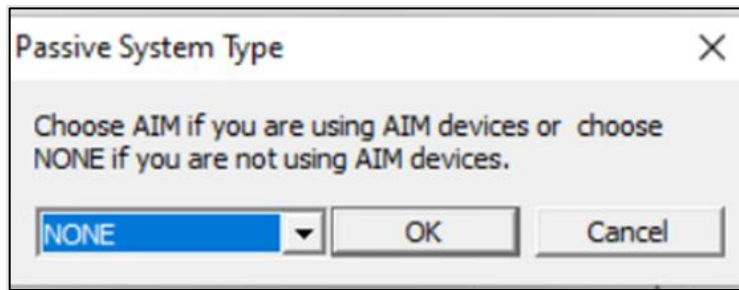


17. Select the desired System Type.



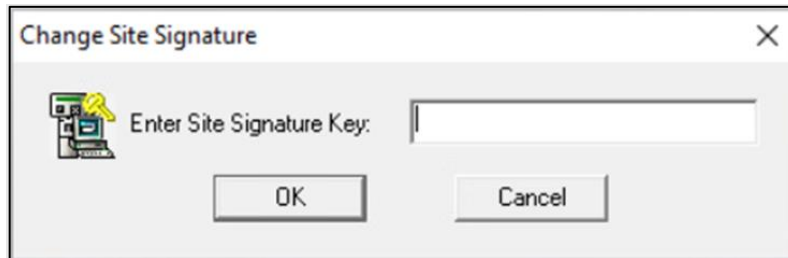
18. For **Category**, select None or Aviation. Select OK.

19. Choose AIM if you are using AIM devices or choose NONE if you are not using AIM devices.



20. Select OK.

21. Enter the Site Signature Key.

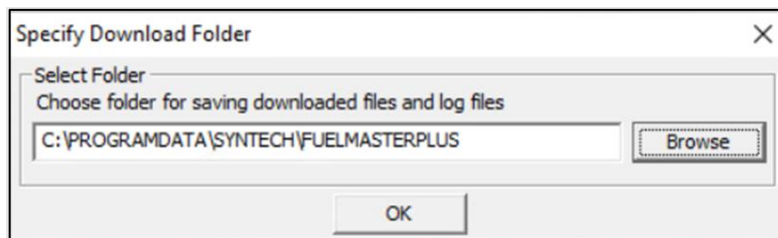


22. Select OK.

Before setting the Download Path, you are prompted to ensure the download directory is accessible by all users.

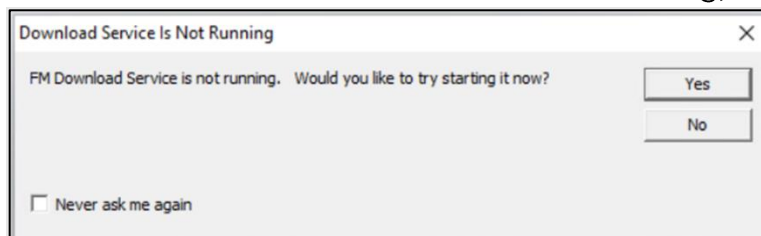
23. Select OK.

24. Specify a shared Download Folder by entering a network location or **Browse** to the desired network node.

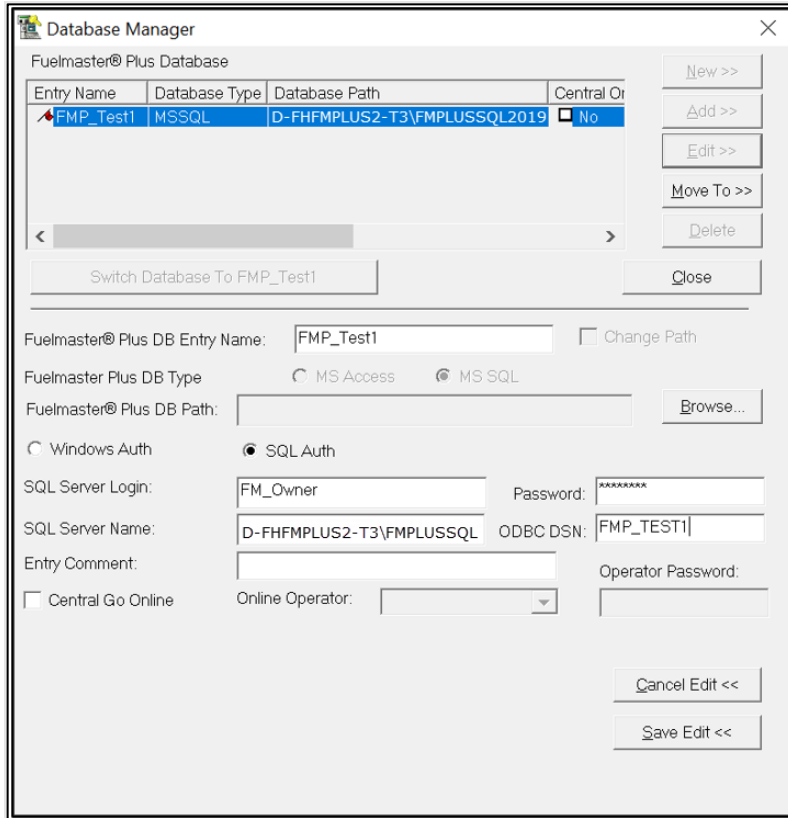


25. Select OK.

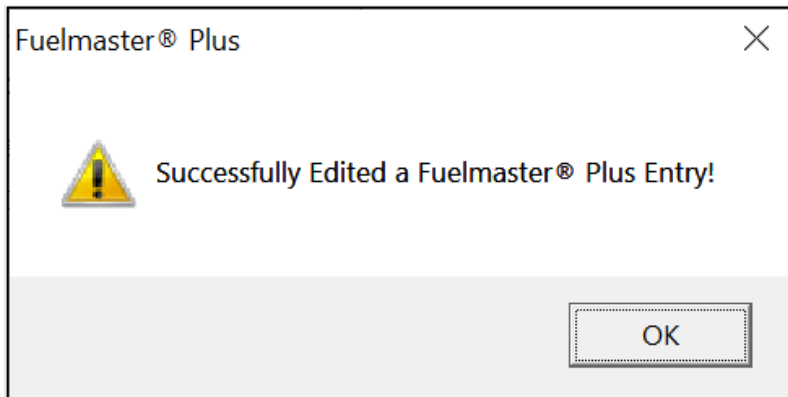
26. In the event the Download Service is not running, select **Yes** to try to start now.



27. Enter the ODBC DSN. When working with multiple databases, naming the DSN the same as the database may be helpful but is not required.



28. Select Save Edit.



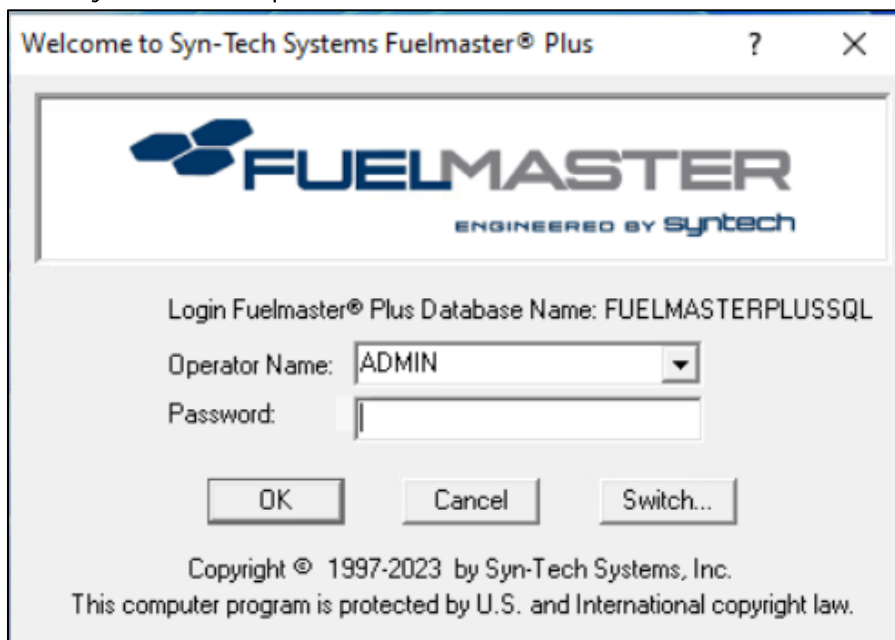
29. Select OK.

## Upgrading/Converting an Access Database to a SQL Database

When upgrading, the full client installation runs to be sure all the current files and resources are updated. Following the upgrade, on first launch of FMPlus, the conversion notice provided depends on the database type. MS SQL databases are directly converted to the correct database level, but MS Access databases must first be converted to MS SQL.

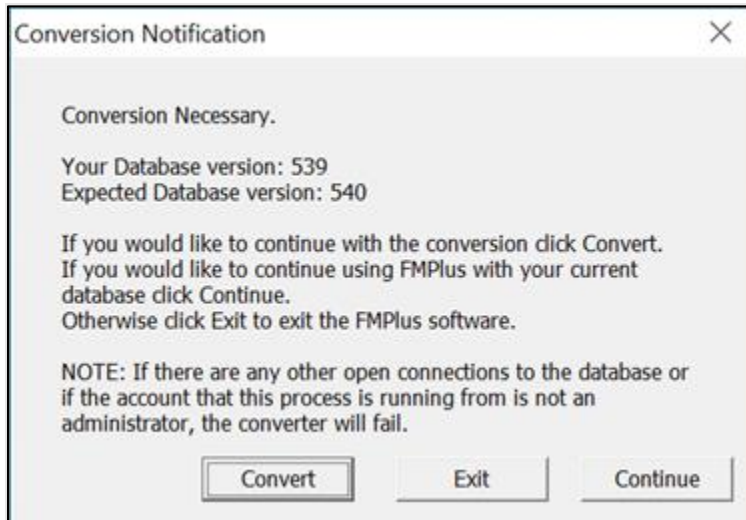
For Release 5.3.3.0 and greater, the FMPlus conversion notice for Access databases provides the ability to launch the **DB Manager** to convert the database to MS SQL and then apply the correct database level.

1. As an admin user (or run as administrator), launch the FuelMaster Plus icon on the desktop.
2. Enter your Admin password. Click *OK*.



The screenshot shows a Windows-style dialog box titled "Welcome to Syn-Tech Systems Fuelmaster® Plus". The dialog features the FuelMaster logo, which consists of three blue hexagons followed by the text "FUELMASTER" and "ENGINEERED BY Syntech" below it. Below the logo, the text "Login Fuelmaster® Plus Database Name: FUELMASTERPLUSSQL" is displayed. There are two input fields: "Operator Name:" with a dropdown menu showing "ADMIN" and a small downward arrow, and "Password:" with an empty text box. At the bottom of the dialog are three buttons: "OK", "Cancel", and "Switch...". Below the buttons, the copyright information "Copyright © 1997-2023 by Syn-Tech Systems, Inc. This computer program is protected by U.S. and International copyright law." is shown.

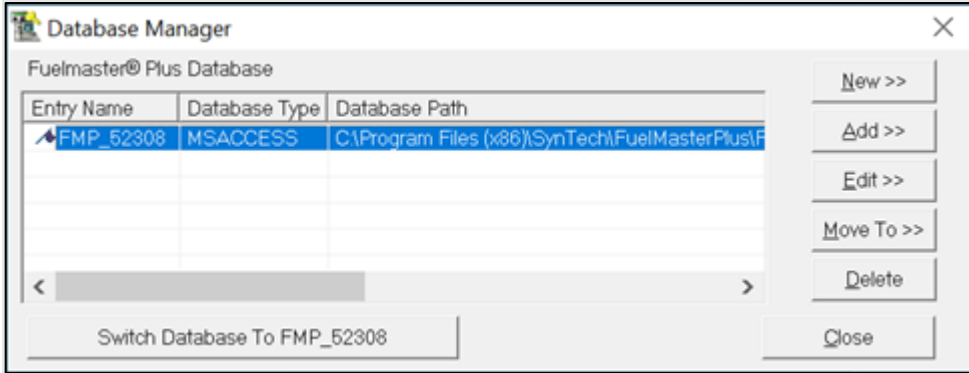
3. If you are upgrading with a SQL database, select **Convert** on the **Conversion Notification** dialog. When the conversion finishes, select **Exit**.



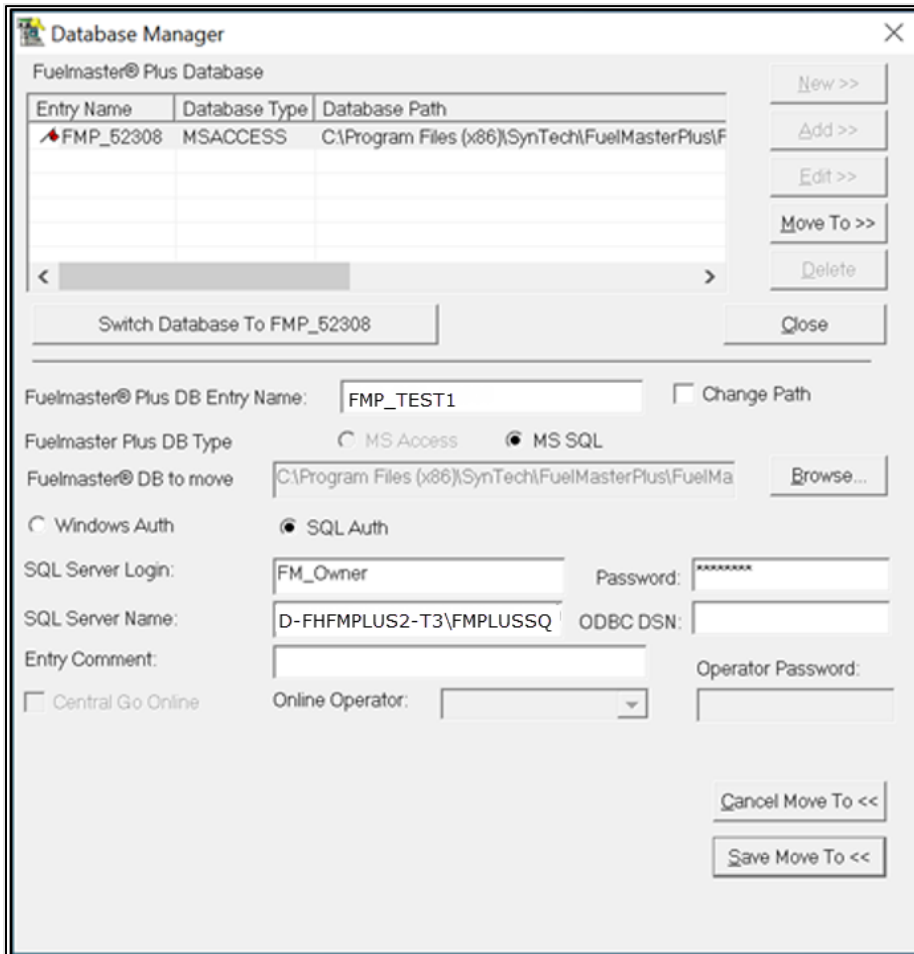
4. If you are upgrading with an Access database, on the **Conversion Notification** dialog, select **DB Manager**.



- 5. In Database Manager, highlight your Access database and select **Move To >>**.

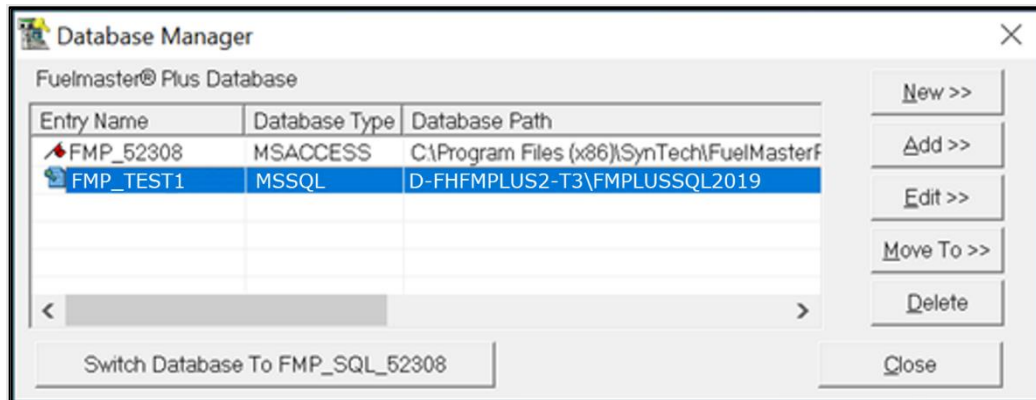


- 6. Complete the fields for DB Entry Name, Path to the DB to move, and the SQL Server Name (computer\_name\SQL\_instance). The default SQL Server Login and password are provided but may be changed if desired. Enter an Entry Comment if desired. Select **Save Move To <<**.

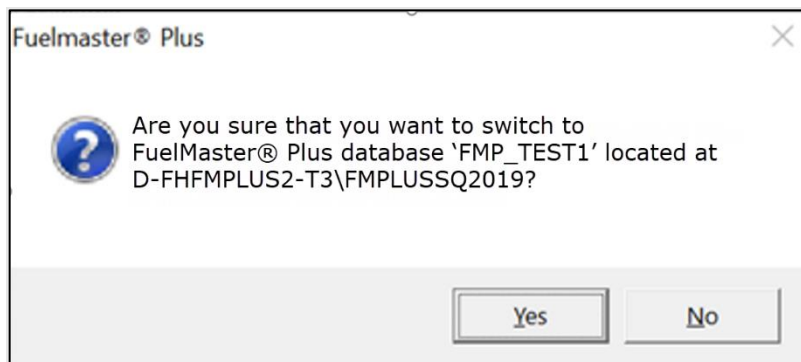


**NOTE** The new DB Entry Name must be unique and cannot be the same as any existing database, including the name of the Access database.

- The Database Converter launches, runs the conversion, and automatically closes.
- The Database Manager opens. Highlight the new DB Entry and select **Switch Database to [Database Name]**.



- Select Yes.



- After the switch to the converted SQL database succeeds, set your Admin password, the location for FMPlus download files, and the ODBC DSN for Reports.

After this, the Create Archive Database popup will appear. Review [Creating a New or Using an Existing SQL Database for FuelMaster](#) (step 15) for more information.