

FMU Stop Switch

The FMU Stop Switch option may be wired as an external power switch for the FMU or an emergency stop switch.

NOTE If wired as an emergency stop switch for all service island equipment, the switch must be used only to power a relay controlling power to the service island. Under no circumstances will power wires for other service island equipment be brought into the FMU for control by the stop switch.

Install the FMU Stop Switch

1. Remove AC power from FMU.
2. Mark the hole position on the right side of the Pedestal (same side as ID plate) 6-1/4" down from the flange and 3" from the front (door side) (see Figure 1).

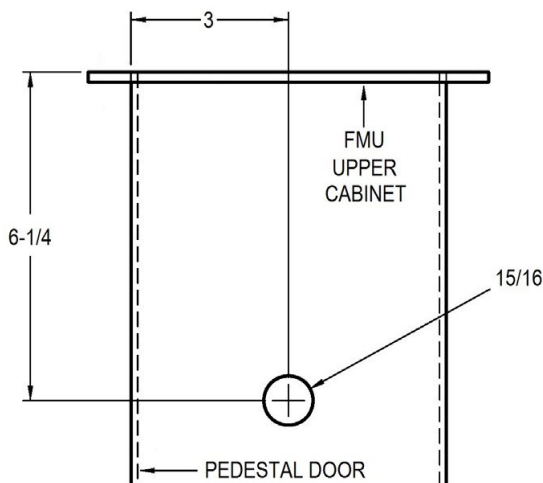


Figure 1 Locating FMU Stop Switch

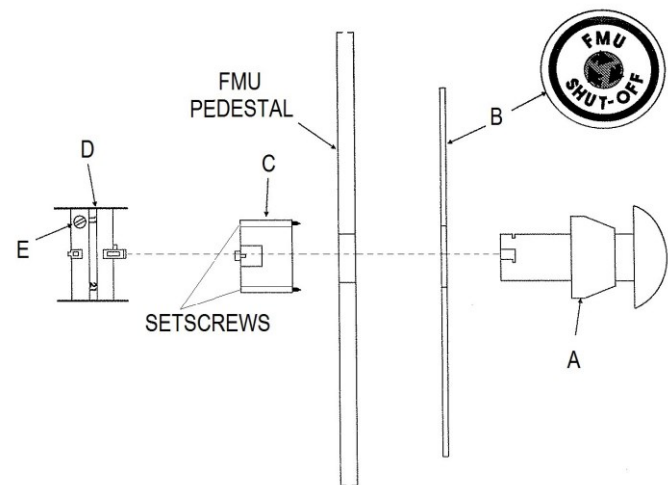


Figure 2 FMU Stop Switch Installation

3. Protect the electronics on the inside of the Pedestal from loose metal filings and using a hole punch or hole saw, make a 15/16" hole in the side of the Pedestal at the center located in step 2.
4. Insert Switch Knob (A) through Label Plate (B), then insert Switch Knob (A) through hole in Pedestal from outside Pedestal (see Figure 2).
5. Engage and lock Switch Knob (A) in end of Switch Stop (C). Switch Knob (A) and Label Plate (B) should be outside FMU Pedestal, and Switch Stop (C) should be inside FMU Pedestal.
6. Tighten two setscrews in Switch Stop (C) to remove looseness.
7. Snap Switch Contact (D) on Switch Stop (C).

Wire the FMU Stop Switch as an Extended FMU Power Switch

WARNING Electrical shock hazard! Turn off power at circuit breaker, not at FMU Power Switch.

1. Separate the black wire connection to interrupt incoming AC power from the FMU power switch. There is a black (hot) wire and a white (neutral) wire wire-nutted to the same color wires from the FMU Surge Panel two-wire harness.
2. Run a black wire from the Surge Panel to one contact (E) (the Switch Contact (D) has two contacts (E)). It may be necessary to add wire to reach the FMU Stop Switch (see Figure 2).
3. Connect the black wire from the FMU power switch to the other contact (E).
4. Reinstall the FMU Surge Panel, if removed.
5. Restore AC power to the FMU at the circuit breaker panel.

NOTE If the FMU Stop Switch has been actuated, reset by turning the mushroom knob in the direction of the arrows until the knob snaps out.

6. Ensure the FMU power switch is turned on and reset, and verify the FMU display reads:

FUELMASTER FUEL MANAGEMENT SYSTEM

INSERT KEY, HOLD 1 SECOND TO BEGIN

7. Push in the mushroom knob on the FMU Stop Switch. Verify the FMU display goes blank.
8. Reset FMU Stop Switch by turning in the direction of the arrows until the knob pops out. Verify FMU power is restored by observing the display.

Wire the FMU Stop Switch as an Emergency Stop Switch for Service Island Equipment

NOTE When used as an emergency stop switch for all service island equipment, the FMU Stop Switch must be used only to control a relay controlling power to the service island.

1. Remove AC power from the emergency stop relay. Ensure that power is removed from all service island equipment.
2. Run two 12AWG THHN wires through rigid explosion-proof conduit from the emergency stop relay to the FMU: one for incoming power to the FMU Stop Switch, a second for switched power from the FMU back to the relay.
3. Connect one 12 AWG wire to one screw (E) on Switch Contact (D).
4. Connect the other 12 AWG wire to the other screw (E) on Switch Contact (D).

NOTE If the FMU Stop Switch has been actuated, reset by turning the mushroom knob in the direction of arrows until the knob snaps out.

5. Ensure the FMU Stop Switch is reset.
6. Restore AC power to the emergency stop relay.

7. Ensure power is restored to service island equipment. The FMU display should read:

FUELMASTER FUEL MANAGEMENT SYSTEM

INSERT KEY, HOLD 1 SECOND TO BEGIN

8. Push in the mushroom knob on FMU Stop Switch. If the installation was performed correctly, the FMU display will go blank, and power will be removed from the remaining service island equipment.
9. Reset the FMU Stop Switch by turning in the direction of the arrows until the knob pops out.
10. Verify power is restored to the FMU and all other service island equipment is controlled by the emergency stop relay.

TIP

If any questions arise, contact Syntech Systems, Inc.'s Customer Satisfaction Center (CSC) at 1-800-888-9136, ext. 2, or email support@myfuelmaster.com.